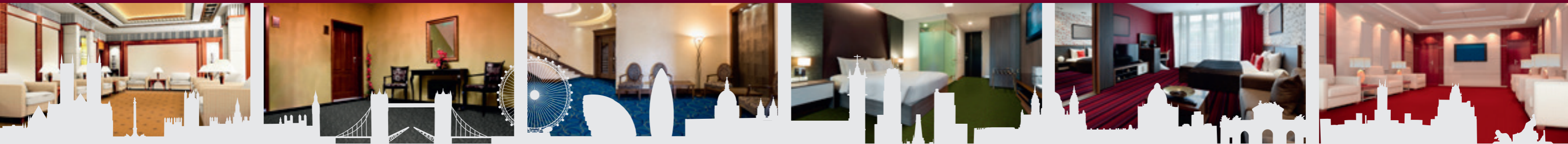




# Cityline III

Heavy Hospitality Carpets





## Index

The story of City Line III	3
London	4/5
Madrid	6/7
Vienna	8/9
Monaco	10/11
Helsinki	12/13
Brussels	14/15
Amsterdam	16/17
Technical Specifications Cityline III	18
Condor Silent Backing	19

## The story of City Line III

We proudly present our new **City Line III collection**. This new collection is exceptional in colour variations and high detailed designs. Divided over 6 styles we combined classic evergreens with new modern and trendy designs. To make the collection ultimate compatible with every environment we added an extra uni-colour range with a total of 16 colours. Enjoy the new level of printed carpet flooring.

“Exceptional in colour variations and high detailed designs”

To complement the optical beauty we added the practical option to finish the carpet, next to standard action backing, with our special sound reducing Silent Backing. For more information and specifications about Silent Backing please visit [www.silentbacking.com](http://www.silentbacking.com).



## Die Geschichte der City Line III

Wir präsentieren stolz unsere neue **City Line III Kollektion**. Die neue Kollektion ist außergewöhnlich in ihren fein gearbeiteten Details und ihrer Farbvielfalt. Unterteilt in 6 verschiedenen Dessinierungen kombinieren wir echte Klassiker und neue moderne und trendige Designs. Um die Kollektion abzurunden und die Kompatibilität zu den meisten Einrichtungsstilen zu erreichen haben wir extra eine 16 Farben umfassende Uniquität lanciert.

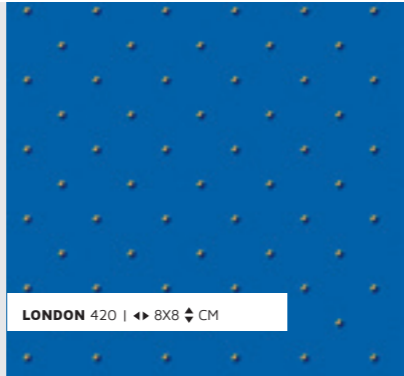
“Außergewöhnlich in Anmutung und Farbgestaltung”

Wir komplettieren die extravaganten Designs mit außergewöhnlichen praktischen Vorteilen neben unserem Textilenzweitrücken mit dem geräuschreduzierenden “Silent Backing”. Für weitere Informationen und Details zu Silent Backing besuchen Sie bitte: [www.silentbacking.com](http://www.silentbacking.com).

# LONDON



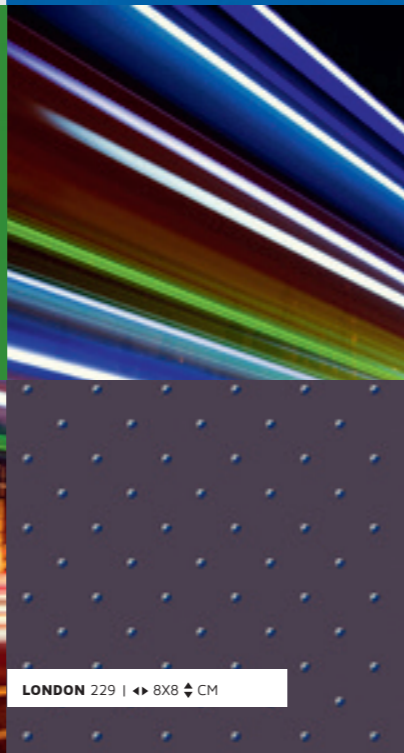
“Well done is better than well said”



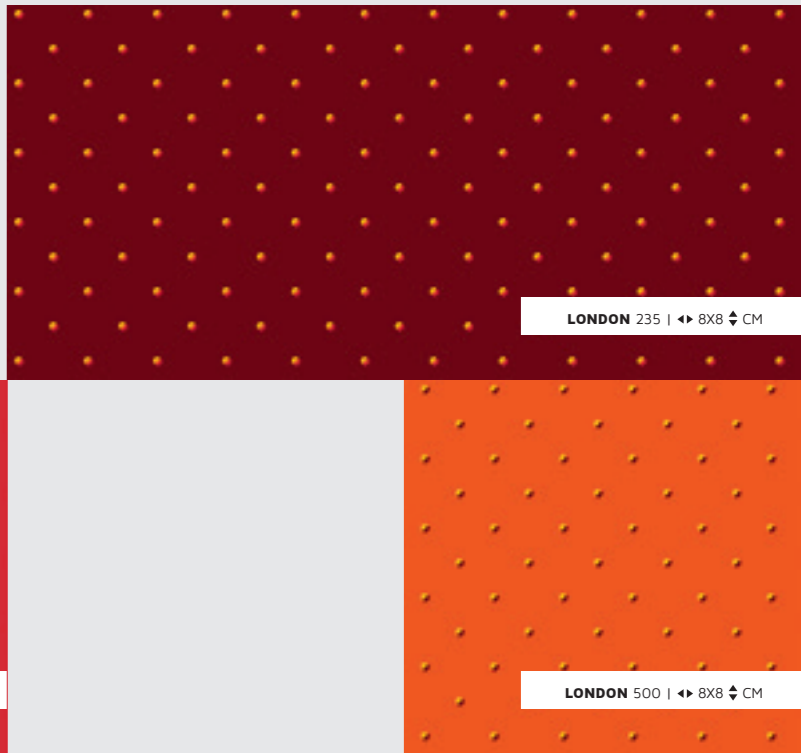
LONDON 420 | ◀▶ 8X8 ⚡ CM



LONDON 525 | ◀▶ 8X8 ⚡ CM



LONDON 229 | ◀▶ 8X8 ⚡ CM



LONDON 235 | ◀▶ 8X8 ⚡ CM

LONDON 230 | ◀▶ 8X8 ⚡ CM

LONDON 500 | ◀▶ 8X8 ⚡ CM



LONDON 325 | ◀▶ 8X8 ⚡ CM



LONDON 156 | ◀▶ 8X8 ⚡ CM



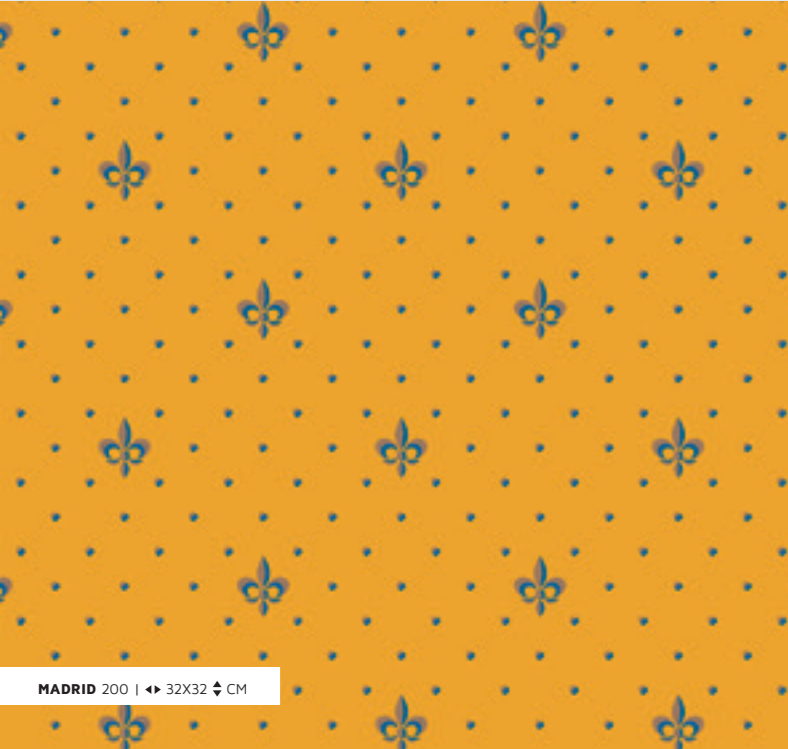
# MADRID



"If you don't have a competitive advantage, don't compete"



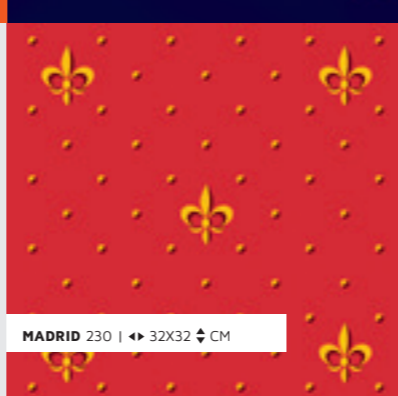
MADRID 229 | ◀▶ 190X133 ⚡ CM



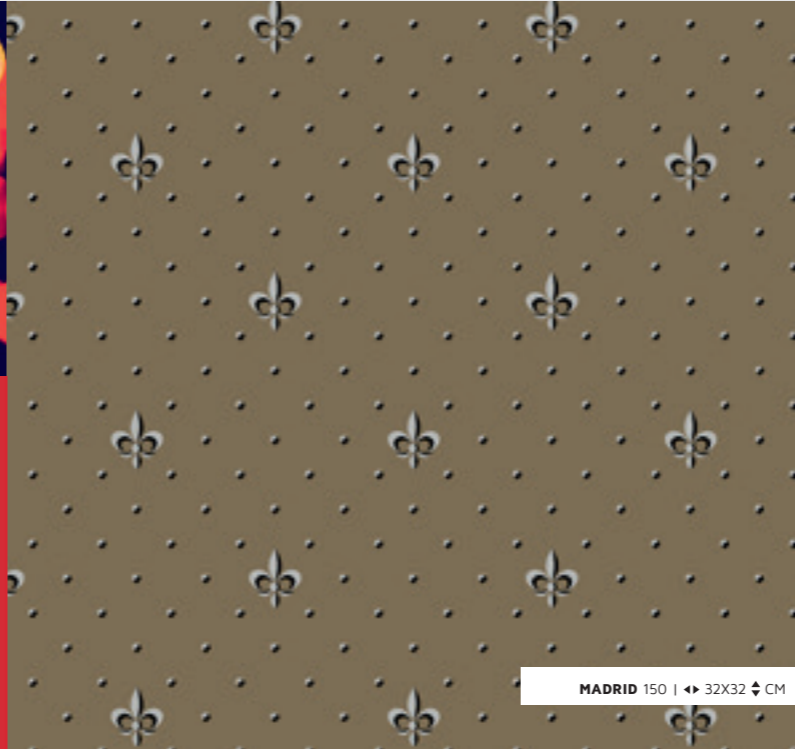
MADRID 200 | ◀▶ 32X32 ⚡ CM



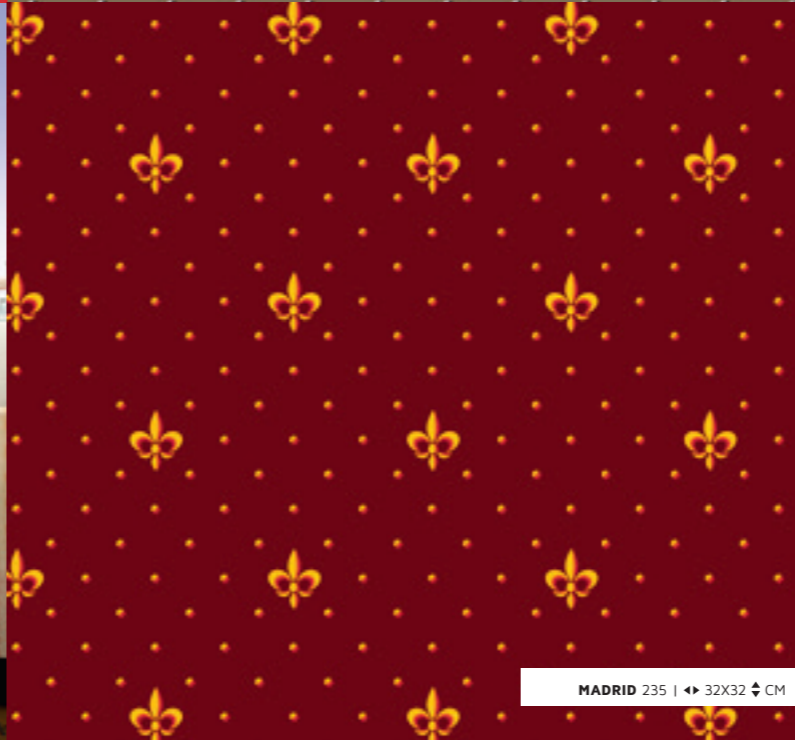
MADRID 210 | ◀▶ 32X32 ⚡ CM



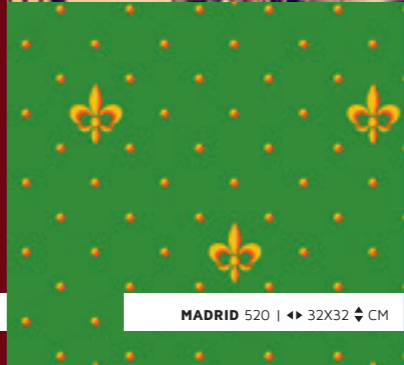
MADRID 230 | ◀▶ 32X32 ⚡ CM



MADRID 150 | ◀▶ 32X32 ⚡ CM



MADRID 235 | ◀▶ 32X32 ⚡ CM



MADRID 520 | ◀▶ 32X32 ⚡ CM



MADRID 420 | ◀▶ 32X32 ⚡ CM

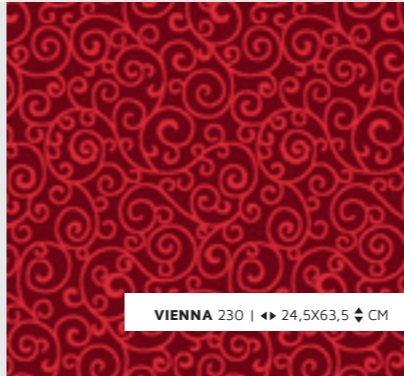
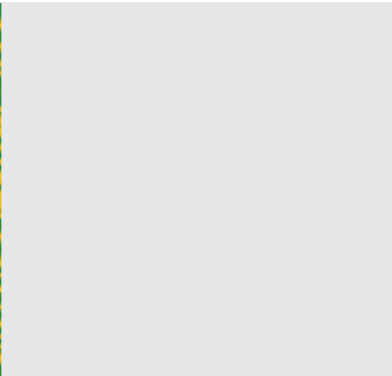
# VIENNA



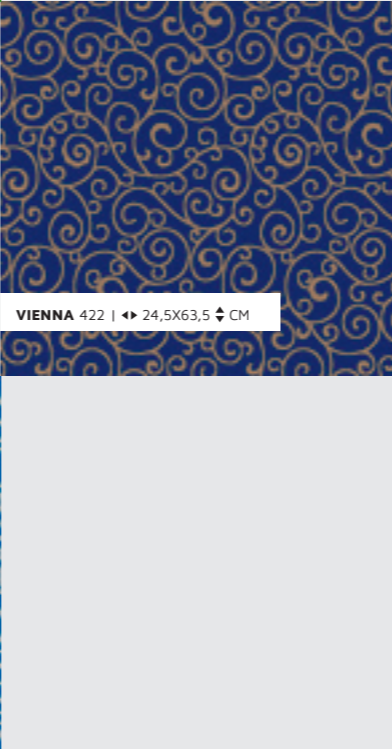
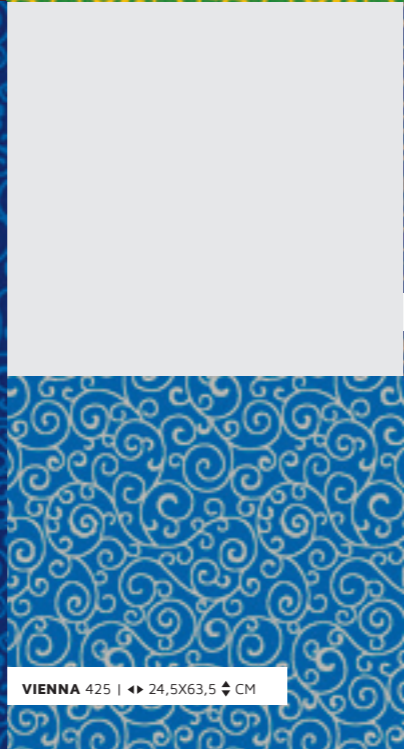
“Set your goals high.  
And don't stop till  
you get there”



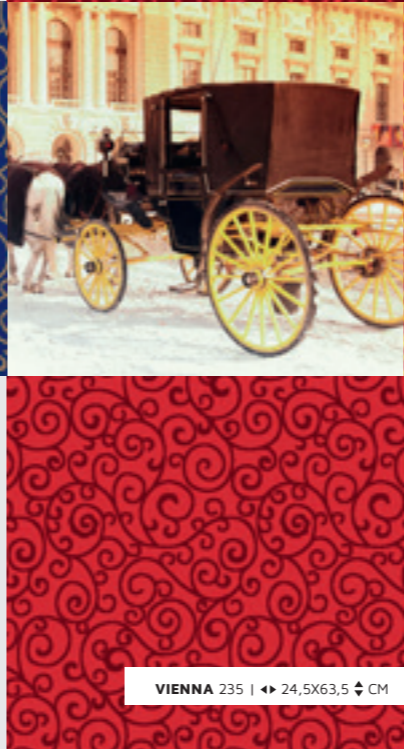
VIENNA 525 | ◀▶ 24,5X63,5 ⚡ CM



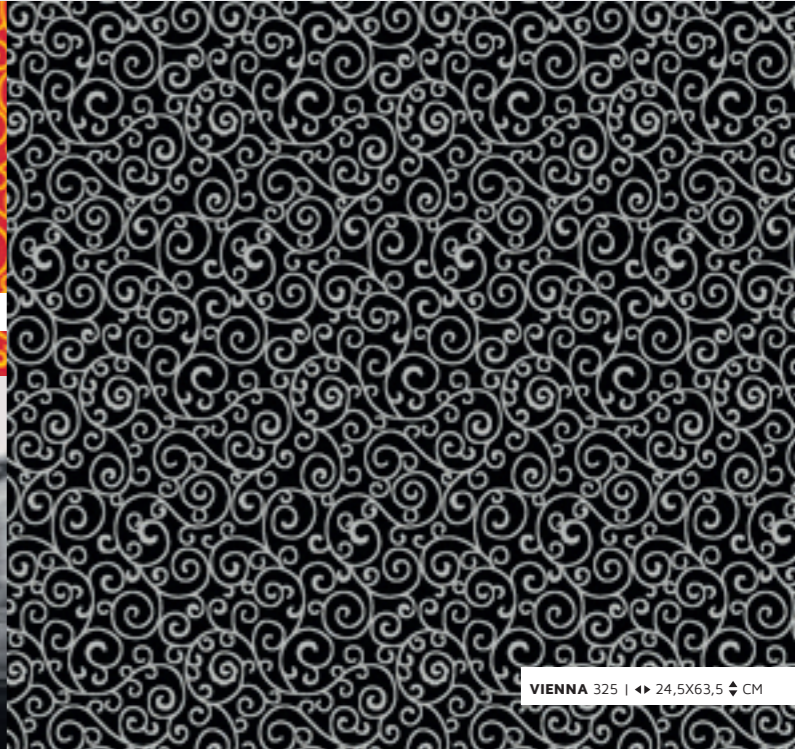
VIENNA 230 | ◀▶ 24,5X63,5 ⚡ CM



VIENNA 422 | ◀▶ 24,5X63,5 ⚡ CM



VIENNA 210 | ◀▶ 24,5X63,5 ⚡ CM



VIENNA 325 | ◀▶ 24,5X63,5 ⚡ CM

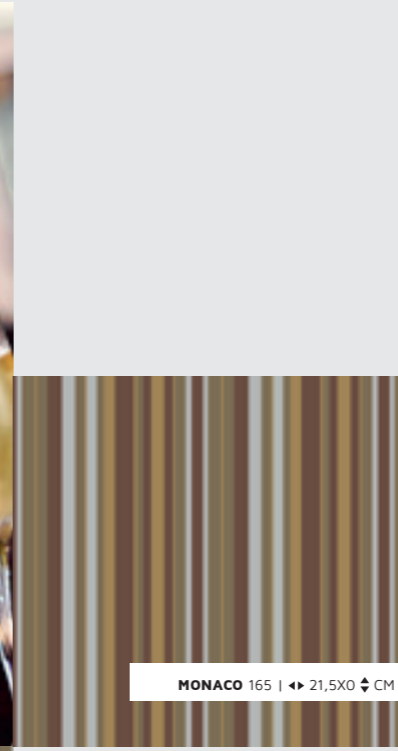


# MONACO

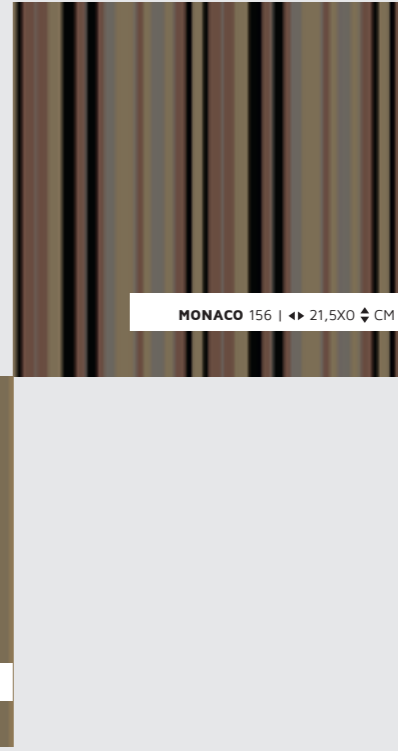
“You can’t criticize geometry. It’s never wrong”



MONACO 235 | ◀▶ 21,5X0 ⚡ CM



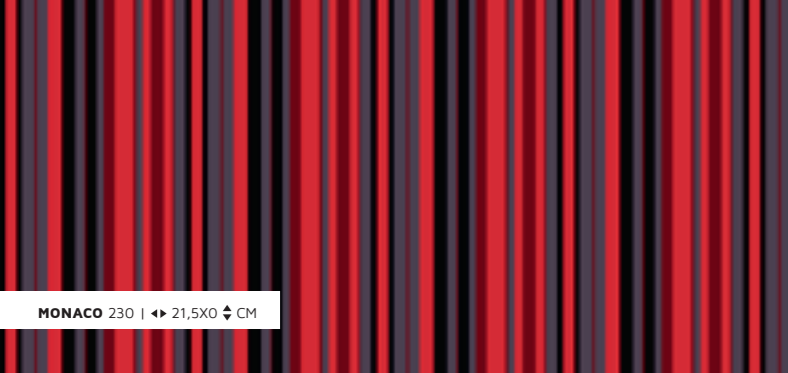
MONACO 165 | ◀▶ 21,5X0 ⚡ CM



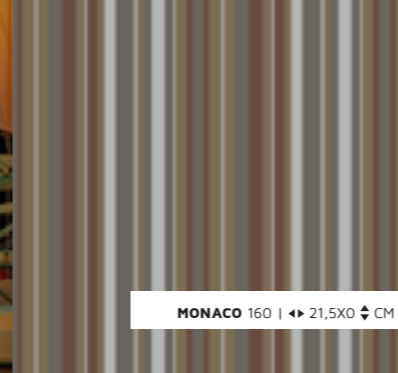
MONACO 156 | ◀▶ 21,5X0 ⚡ CM



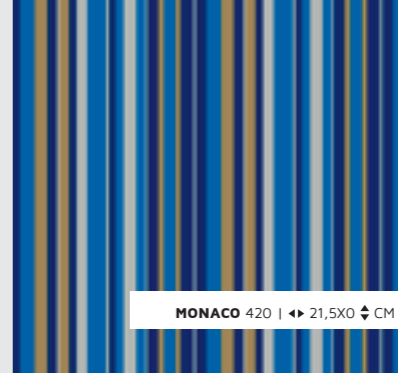
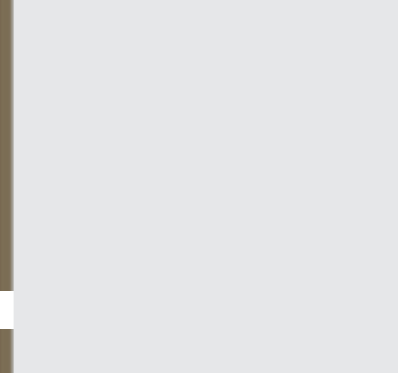
MONACO 130 | ◀▶ 21,5X0 ⚡ CM



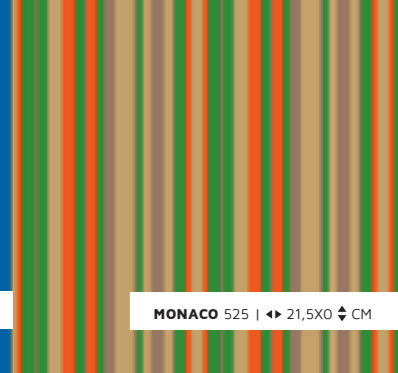
MONACO 230 | ◀▶ 21,5X0 ⚡ CM



MONACO 160 | ◀▶ 21,5X0 ⚡ CM



MONACO 420 | ◀▶ 21,5X0 ⚡ CM



MONACO 525 | ◀▶ 21,5X0 ⚡ CM



# HELSINKI

"Inspiration is needed in geometry, just as much as in poetry"

HELSINKI 320 | ◀▶ 24X24 ⚡ CM

HELSINKI 325 | ◀▶ 24X24 ⚡ CM

HELSINKI 156 | ◀▶ 24X24 ⚡ CM

HELSINKI 230 | ◀▶ 24X24 ⚡ CM

HELSINKI 210 | ◀▶ 24X24 ⚡ CM

HELSINKI 520 | ◀▶ 24X24 ⚡ CM

HELSINKI 525 | ◀▶ 24X24 ⚡ CM

HELSINKI 420 | ◀▶ 24X24 ⚡ CM



# BRUSSELS



BRUSSELS 420 | ◀▶ 96X96 ⚡ CM

"If it doesn't challenge you, it won't change you"



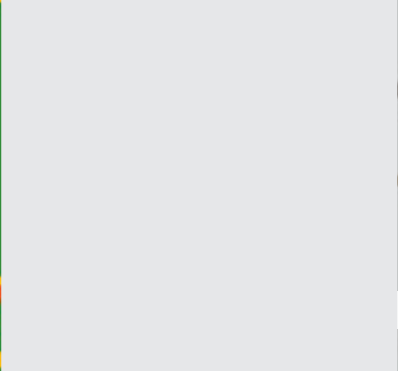
BRUSSELS 235 | ◀▶ 96X96 ⚡ CM



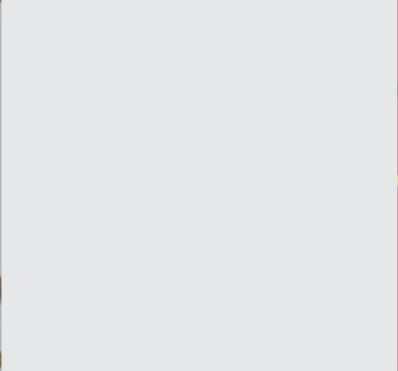
BRUSSELS 325 | ◀▶ 96X96 ⚡ CM



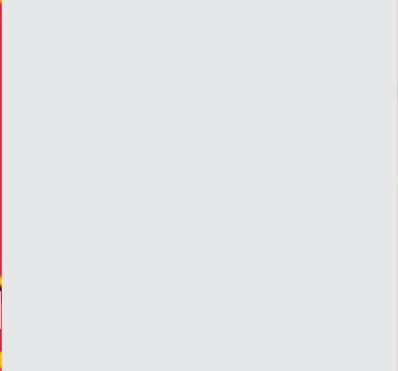
BRUSSELS 520 | ◀▶ 96X96 ⚡ CM



BRUSSELS 310 | ◀▶ 96X96 ⚡ CM



BRUSSELS 230 | ◀▶ 96X96 ⚡ CM



BRUSSELS 130 | ◀▶ 96X96 ⚡ CM



BRUSSELS 150 | ◀▶ 96X96 ⚡ CM





# AMSTERDAM



“We will either find a way, or make one”

AMSTERDAM 420 | ◀▶ OXO ⚡ CM

AMSTERDAM 260 | ◀▶ OXO ⚡ CM

AMSTERDAM 525 | ◀▶ OXO ⚡ CM



AMSTERDAM 327 | ◀▶ OXO ⚡ CM

AMSTERDAM 301 | ◀▶ OXO ⚡ CM

AMSTERDAM 425 | ◀▶ OXO ⚡ CM



AMSTERDAM 160 | ◀▶ OXO ⚡ CM



AMSTERDAM 305 | ◀▶ OXO ⚡ CM



AMSTERDAM 240 | ◀▶ OXO ⚡ CM

AMSTERDAM 180 | ◀▶ OXO ⚡ CM

AMSTERDAM 120 | ◀▶ OXO ⚡ CM



AMSTERDAM KLEURCODE | ◀▶ OXO ⚡ CM

AMSTERDAM 101 | ◀▶ OXO ⚡ CM

AMSTERDAM 190 | ◀▶ OXO ⚡ CM

AMSTERDAM 215 | ◀▶ OXO ⚡ CM

AMSTERDAM 230 | ◀▶ OXO ⚡ CM

## Technical Specifications Cityline III

Production method	1/8" Cut pile
Pile material	100% PA
Class	33
Width	400 cm
Carrier	Woven
Effective pile height	Ca. 6 (visual) mm
Total thickness	Ca. 9 (AB) mm
Pile weight	Ca. 1000 gr/m <sup>2</sup>
Total weight	2050 (AB) gr/m <sup>2</sup>
Number of tufts	128.000 1/m <sup>2</sup>
Backing	AB / Silent Backing*



Attention: Colours printed in this brochure may vary from original.

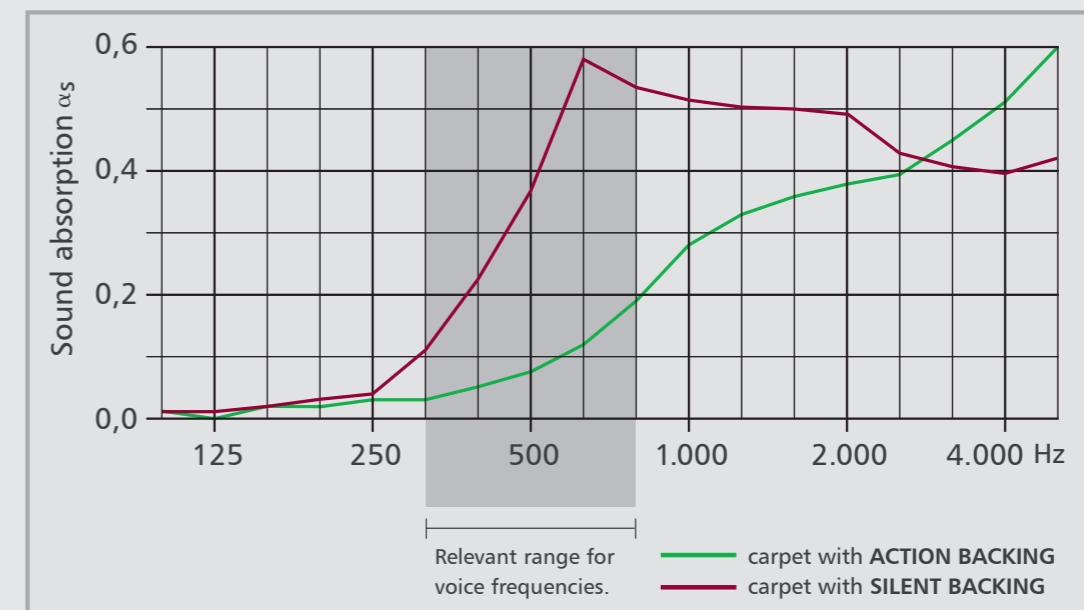


## Silent Backing

the comfort of silence

### Condor Silent Backing\*

The Cityline III is next to our standard Action Backing available with our new sound absorbing Silent Backing. With the Condor Silent Backing you are able to optimize the comfort and health of the people in your environments by optimal reducing noise. *For more information about the Condor Silent Backing, please contact us.*





**Condor Carpets bv**  
Randweg 14, 8061 RW  
P.O. Box 21, 8060 AA  
Hasselt, The Netherlands

**T** (+31) 38 477 89 11  
**F** (+31) 38 477 89 22  
**E** [info@condorcarpets.nl](mailto:info@condorcarpets.nl)  
**W** [www.condor-group.eu](http://www.condor-group.eu)

